

Eye Care Connectathon Test Overview

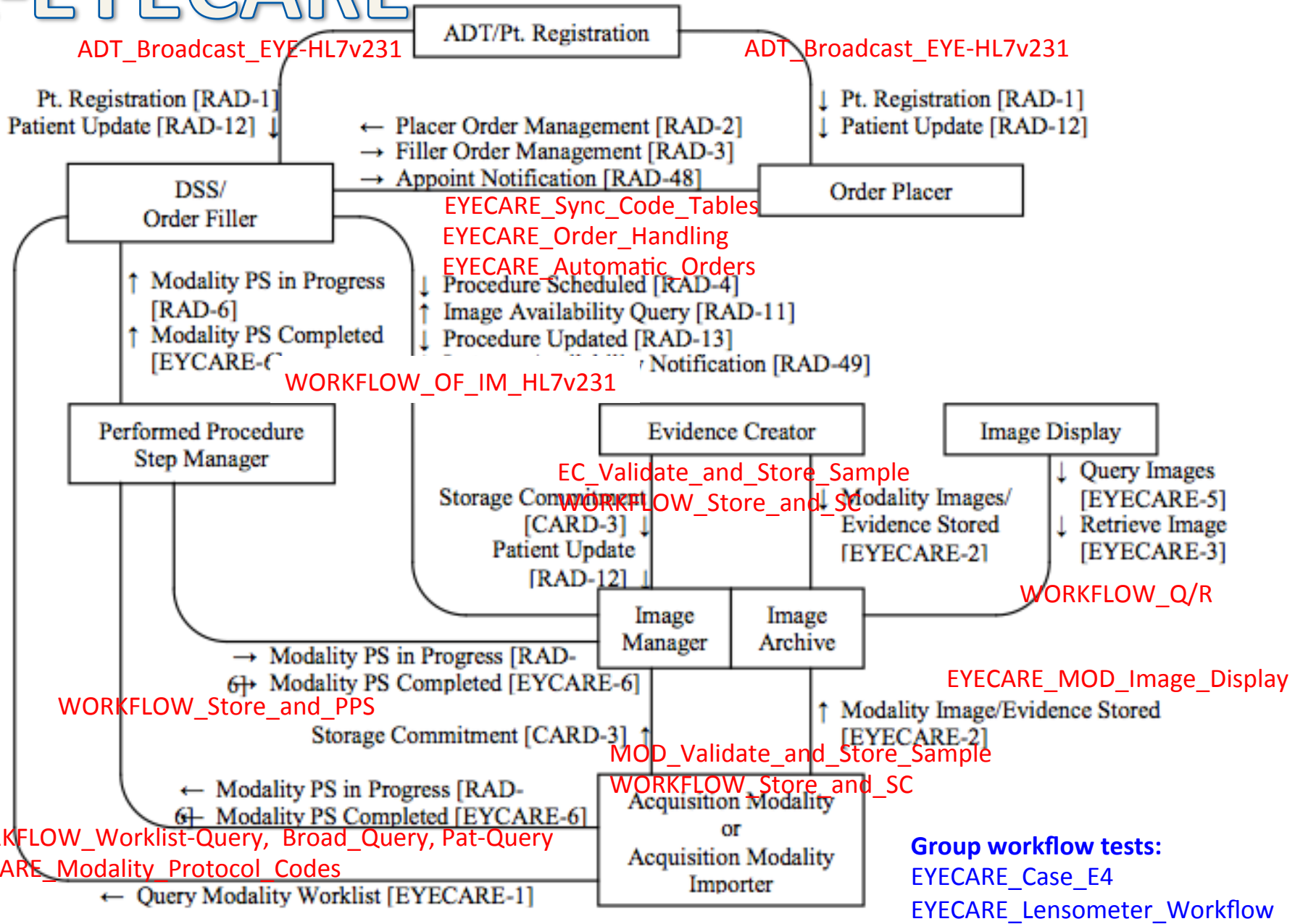
These slides are intended to give a high-level view of Connectathon tests in the Eye Care domain.

Each profile is illustrated by a slide:

1. The profile's actor/transaction diagram is overlaid with the names of Connectathon tests in red font. This gives an indication of which portion of the profile each test covers. *(Note that tests associated with profile options are not included on these overview slides.)*

You can review the details of each test on your main Connectathon page in gazelle. See menu Connectathon/Connectathon. Click on the name of each test on your link to see the details.

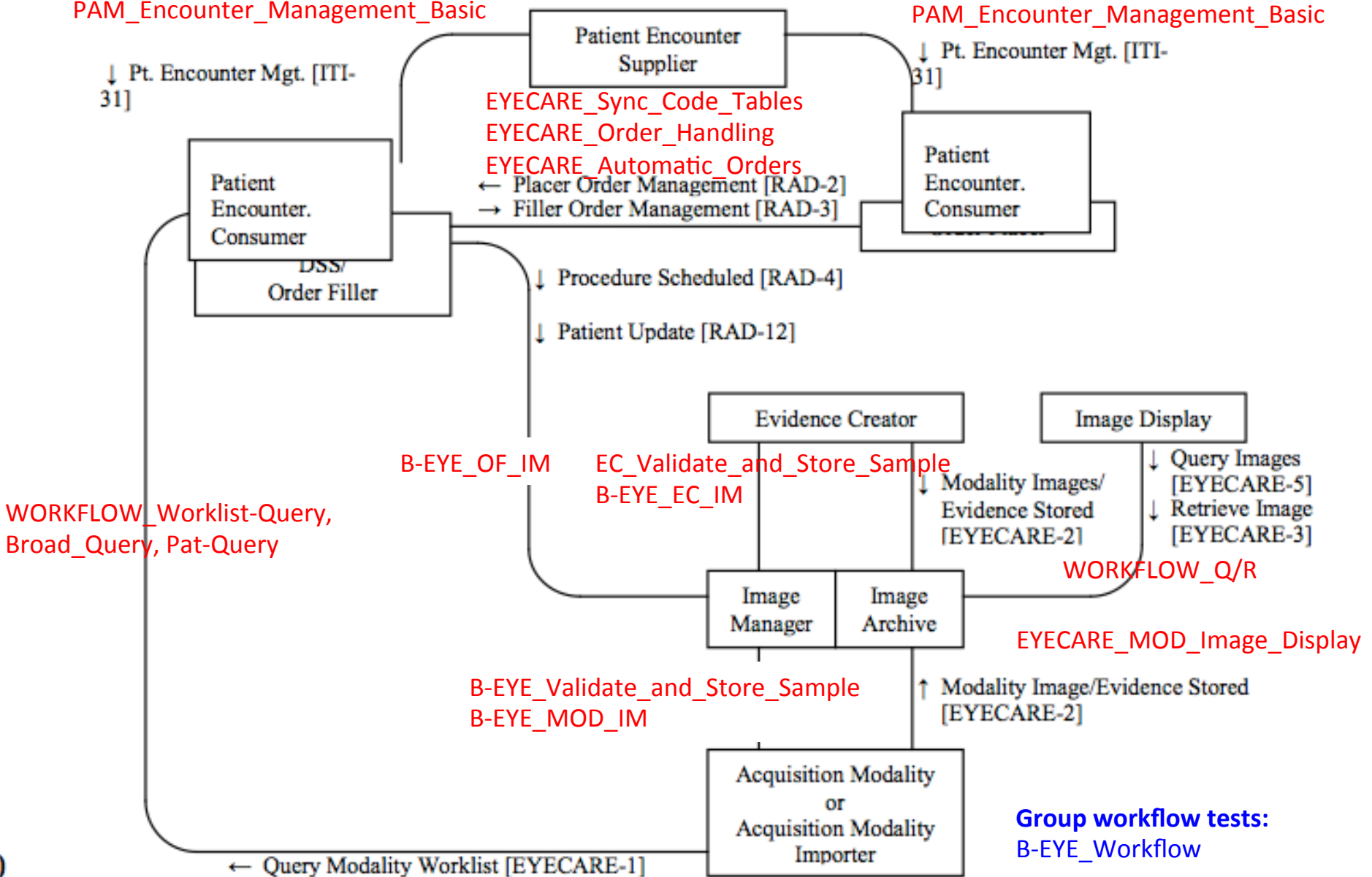
A-EYECARE



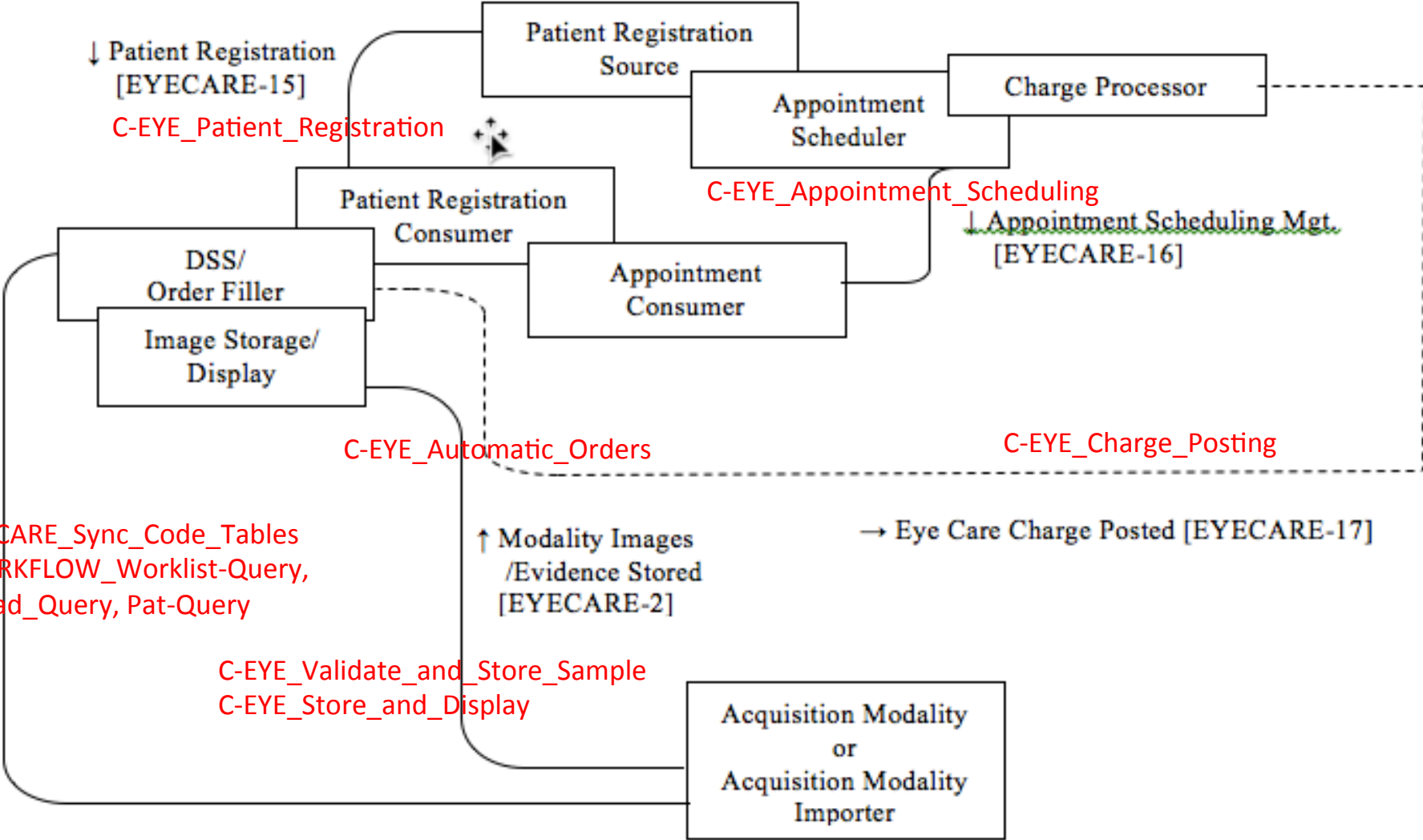
B-EYECARE

PAM_Encounter_Management_Basic

PAM_Encounter_Management_Basic



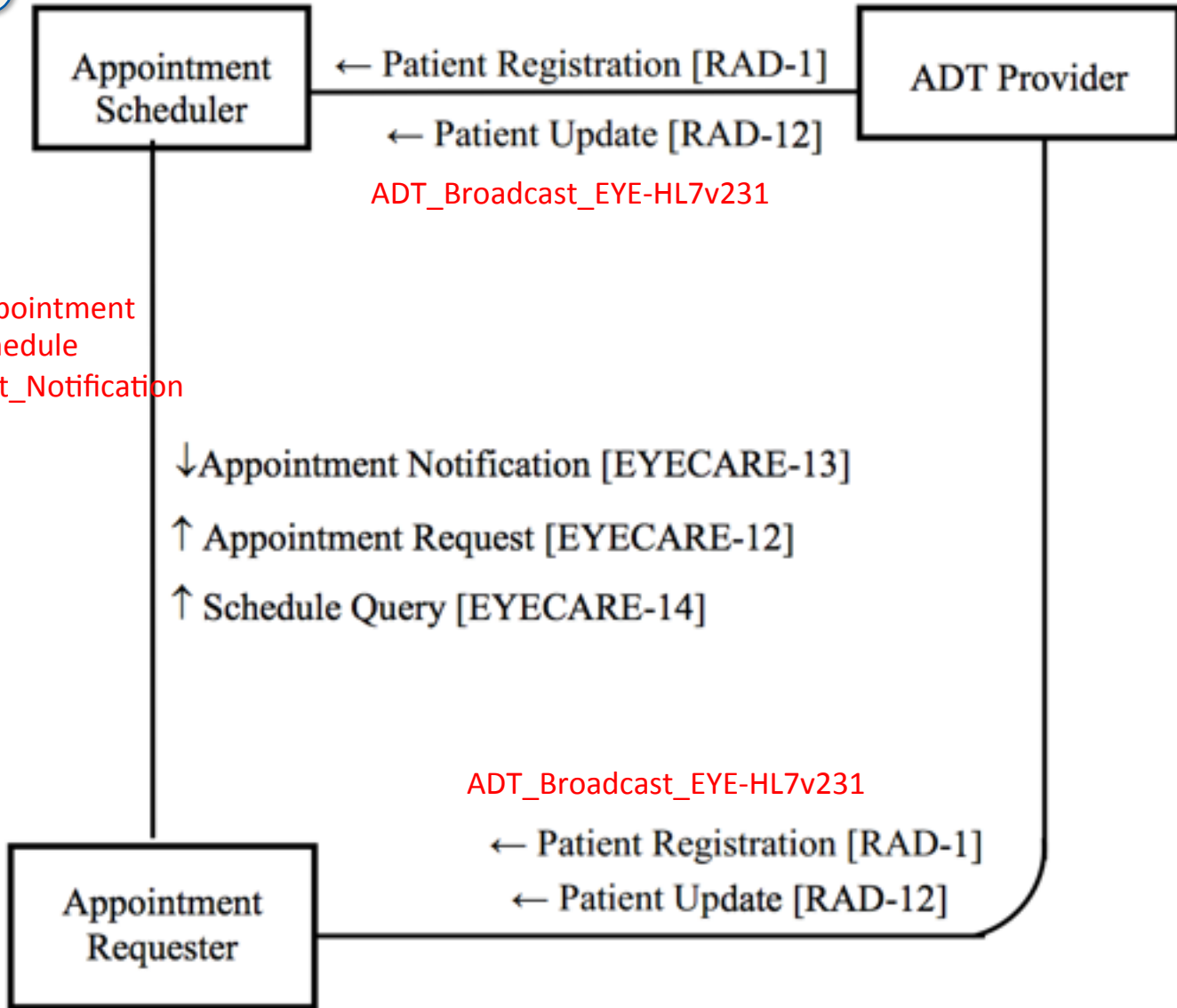
C-EYECARE



EYECARE_Sync_Code_Tables
WORKFLOW_Worklist-Query,
Broad_Query, Pat-Query

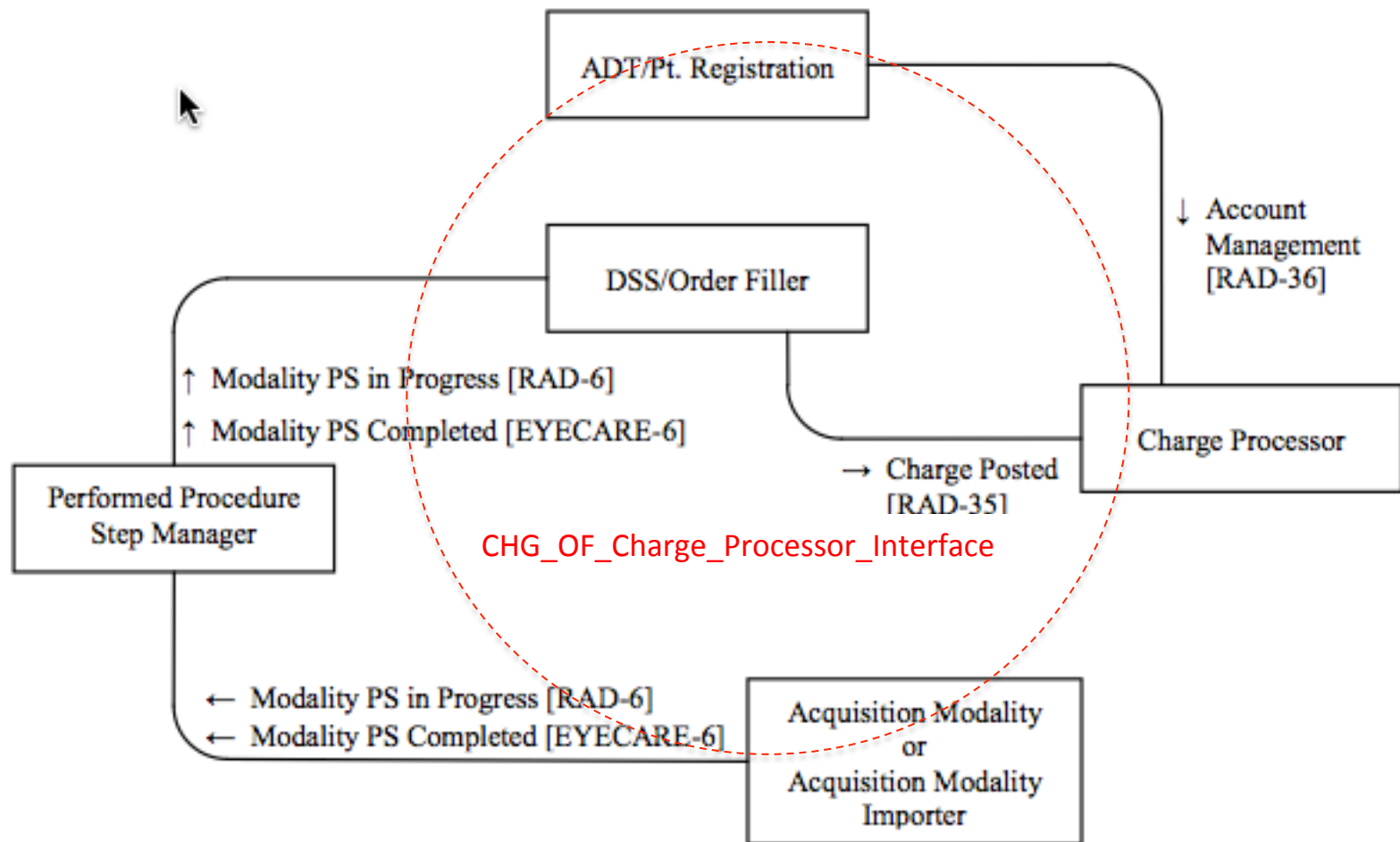
Group workflow tests:
C-EYE_Workflow

ECAS

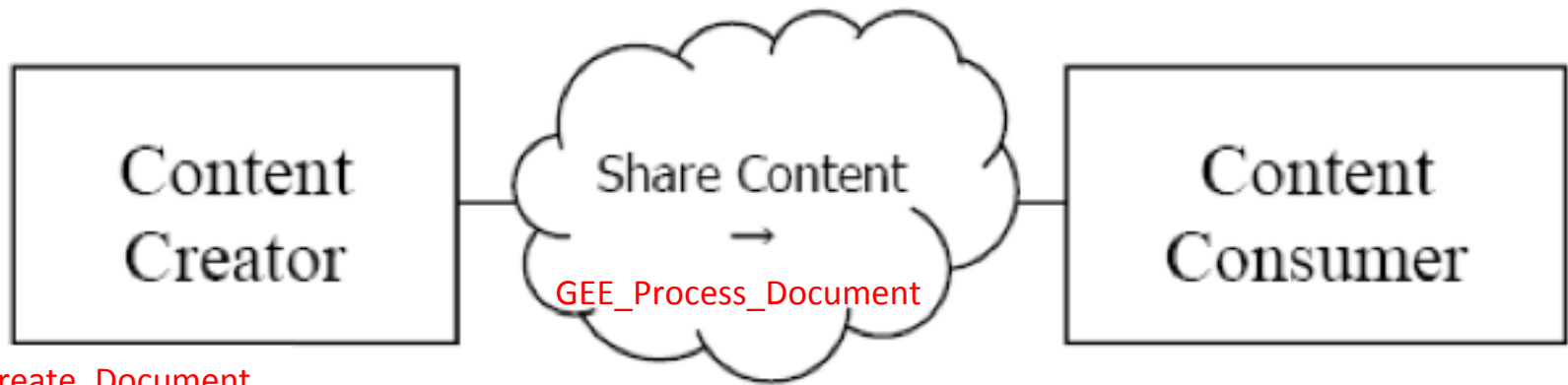


ECAS_Request_Appointment
ECAS_Request_Schedule
ECAS_Appointment_Notification

EYE-CHG



GEE



GEE_Create_Document