

TIPS: Network configuration to test Online

We will test over the **Internet**

Make sure you know your public IP address and what is the process to configure your company's firewall.

**May
21**

Review, update, and approve your system's configurations in Gazelle Test Management

**May
26**

Connectivity tests webinar kick-off

**Jun
14**

Connectathon starts. You are ready to connect to your peers

Tools' IPs

Gazelle Proxy: 151.80.206.32

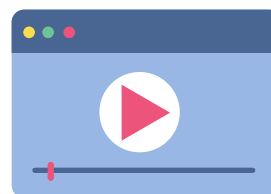
Gazelle Tools*: 151.80.206.33

Central archive: 147.135.232.187

NIST Tools: 13.59.69.89

FHIR Read/Write server: 51.83.86.150
(port 6080)

Need Help ?



Sharing SUT configurations for Connectathon ONLINE